



# Drop-in Gear Drives

Standard Machine operates one of the largest and most fully equipped repair and upgrading facilities in North America. As such, we can offer drop-in gear speed reducers or increasers.

These drives are designed and manufactured to the exact critical envelope dimensions of an existing gear drive.

Drop-in gear reducers or increasers are economical, with no modifications to coupling or drive base required. We use the latest generation design and manufacturing techniques to ensure trouble-free operation and long service life.

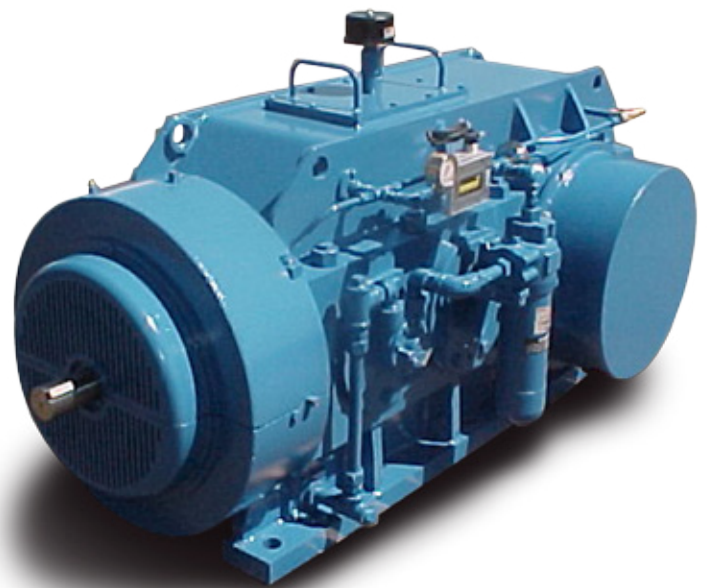
Our gear drive designs can replace any brand or generation and will meet or exceed the application's current horsepower and thermal requirements—and can be modified to correct or improve existing design shortfalls. We use only the latest materials, bearings and seals available and offer modified warranties.

- Available in foot mounted solid shaft design or hollow output shaft design
- Ratios available from 1.25:1 and up
- Ratings to over 10,000 HP
- Available with circulating oil systems
- Available with fan cooling or heat transfer systems
- Available with internal or external backstops or brakes
- Available in any drive configuration, such as right angle, parallel or planetary



## Drop-in Gear Drives

- Fabricated steel housing
- Gearing can be through hardened or case carburized
- Designed mechanical ratings and thermal ratings to meet or exceed the original gear drive



***For more information contact us today!***

**Standard Machine** 868 60th Street East, Saskatoon, SK  
Canada S7K 8G8 [sales@standardmachine.ca](mailto:sales@standardmachine.ca) **1.800.329.GEAR / 306.931.3343**